

Production Real Time Monitoring System



Overview and Applications

Production real time monitoring system (PMS) is the system designing for industrial companies having counting or producing, on the other hand, to increase capacity in production controlling and efficiency in working. The system is shown production as real time and it can be connected as network RS-485 to control working and show the result through computer program which is free of change. Moreover, it can be show the result of cards or labels throughout LAN system (TCP/IP) by unlimited number of computers. Thus, it depends on Management's need or grouping of cards or labels only important portion of production.

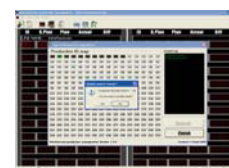
Features and Benefits

Also, its system having warning system to point out problem or need help point while producing which can be easily to controller to immediately inspect or solve the problem. So it shall be suitable for big industrial factories and having a lot of lines in producing due to the system can be abruptly connected to network system (RS485). (PMS) features intelligent display and real time clock built on the solid state technology, our large bright LED display systems deliver both reliability and functionality in terms of clear, sharp and direct visual information. To create a favorable climate for the deployment of production management concept among all staffs, (PMS) becomes an effective data-channel between manager, supervisor, and operators. Ideal for application in TQC, ISO9001 or ISO14000 programmes.

Technical Specification

Number of Row	4 rows
Number of Digit	row 1 : ID = 3 digits, CLOCK = 4 digits, DAILY PLAN = 4 digits
	row 2 : PLAN = 4 digits
	row 3 : ACTUAL = 4 digits
	row 4 : DIFF = 5 digits
Label for Each Row(Screen)	row 1 : ID, CLOCK, DAILY PLAN
	row 2 : PLAN
	row 3 : ACTUAL
	row 4 : DIFF
Digit Height	row 1 : 1"
	row 2 : 2.3"
	row 3 : 2.3"
	row 4 : 2.3"
LED Type	LED Display (7-Segment)
LED Color	Red
Casing Size	W=550, H=400, D=87 mm.
Case Material	Metal (Black Color)
Power Source	220 VAC 50/60 Hz
Count Input	1) Edge Trigger PNP/NPN (Transistor Input/ Sensor Input)
	2) Relay Contact
Reset	Manual or Automatic (Programmable by Software)
Speed(Baud Rate)	9600 bps
Computer Interface	RS-485 / TCP / IP(LAN) / Wireless LAN
Mounting	Hang Mounting

Monitoring & Control Software



Additional Features

- 1) Custom-made design display (process indicator)
- 2) Real time monitoring & planning
- 3) RS-485 Communication networking (up to 256 units)
- 4) Effective visual communication for management
- 5) Promote productivity schedule
- 6) Output alarm for signal tower
- 7) 31 Days plan programmable (by software)
- 8) Production alarm display (Optional)

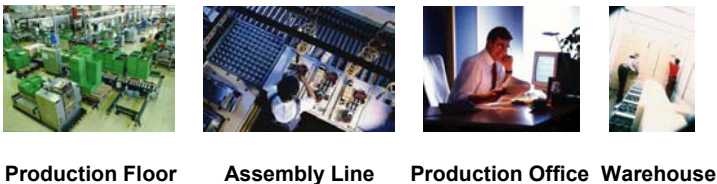
Production Real Time Monitoring System

Production Management Concepts



End Result
End Result On Time Delivery Enhance JIT(Just in time system)

Where To Install ?



Who To Use ?



Production Real Time Monitoring System

Wiring Diagram

