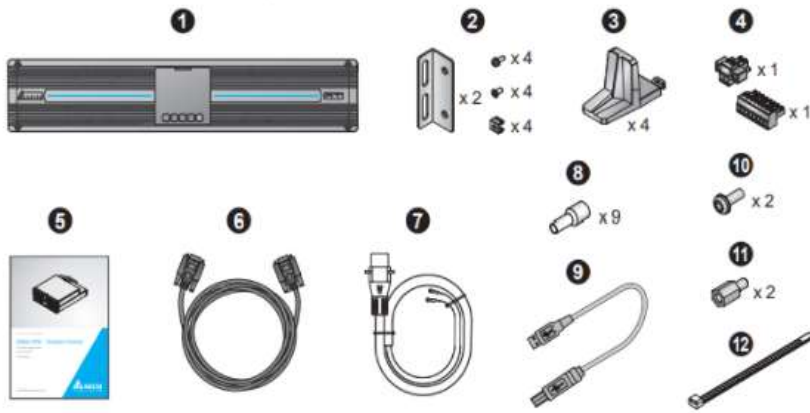


อุปกรณ์ที่แถมมาในกล่อง



No.	Item	5/ 6/ 8/ 10kVA
1	UPS	1 PC
2	Bracket Ear for UPS	1 SET
3	Tower Stand	4 PCS
4	Pluggable Terminal	2 PCS
5	User Manual	1 PC
6	Parallel Cable	1 PC
7	Battery Cable	1 PC
8	Cord End Terminal	9 PCS
9	USB Cable	1 PC
10	Screw (for fixing the battery cable)	2 PCS
11	Standoff (for fixing the battery cable)	2 PCS
12	Cable Tie	6 PCS

Technical Specifications

Model		RT-5K	RT-6K	RT-8K	RT-10K	RT-15K3P	RT-20K3P	
Power Rating		5kVA/5kW	6kVA/6kW	8kVA/8kW	10kVA/10kW	15kVA/15kW	20kVA/20kW	
Input	Voltage Range	100 ~ 280V (Single phase, 2-wire + G) 100 ~ 175V with linear de-rating 50 ~ 100%				138 ~ 485V (Three phase, 4-wire + G) 138 ~ 305V with linear de-rating 40 ~ 100%		
	Frequency	40 ~ 70 Hz						
	Power Factor	> 0.99 (full load)						
	ITHD	< 3%						
	Input connection	Input terminal x 1				Input terminal x 1, Bypass Input terminal x 1		
Output	Power Factor	Unity						
	Voltage	200, 208, 220, 230, 240 Vac (Single phase)				380/400/415 Vac (Three phase), or 220/230/240 Vac (Single phase)		
	Frequency	50/60Hz ±0.05Hz						
	Voltage Harmonic Distortion	≤ 2% (linear load)						
	Overload Capability	≤ 105%: continuous; 106 ~ 125%, 5 min.; 126 ~ 150%, 1 min.; > 150%: 500ms				≤ 105%: continuous; 106 ~ 125%: 2 min.; 126 ~ 150%: 30 sec; > 150%: 200ms		
Receptacle	Standard Runtime Model	C13x6, C19x2, Terminal x 1 Load bank: C19x1		C13x6, C19x4, Terminal x 1 Load bank: C19x1		Terminal x 1		
	Extended Runtime Model	Terminal x 1 Load bank: Terminal x 1						
Efficiency	AC-AC	Up to 95.5%				Up to 96.5%		
	ECO Mode	Up to 99%						
Battery Voltage	Standard Runtime Model	192 Vdc	192 Vdc	240 Vdc	240 Vdc	±144 Vdc*, ±192 ~ 264 Vdc		
	Extended Runtime Model	144 Vdc*, 192 ~ 264 Vdc						
Charger Current	Standard Runtime Model	1A (default)		1.5A (default)		Up to 8A		
	Extended Runtime Model	Up to 8A						
Typical Backup Time	Standard	75% load	5.5 min.	9 min.	6 min.	Depending on different configurations required by customers		
	Runtime Model	Full load	5 min.	3 min.	5 min.			3.5 min.
	Extended Runtime Model	Depending on different configurations required by customers						
Audible Noise		48 dB		50 dB		54 dB		
Display		Graphical and multi-lingual LCD						
Communication Interfaces		MINI Slot x 1, Parallel Port** x 2, USB Port x 1, RS232 Port*** x 1, RS485 Port x 1, REPO/ROO Port x 1, Dry Contact x 4						
Dimensions (W x D x H)	Standard Runtime Model	440 x 665 x 176 mm			440 x 750 x 218 mm		440 x 760 x 88.2 mm	
	Extended Runtime Model	440 x 430 x 88.2 mm			440 x 565 x 88.2 mm			
Weight	Standard Runtime Model	54 kg	54 kg	85.5 kg	85.5 kg	22.5 kg	22.5 kg	
	Extended Runtime Model	10.9 kg	10.9 kg	15.2 kg	15.2 kg			
Environment	Operating Temperature	0 ~ 55° C****						
	Relative Humidity	5 ~ 95% (non-condensing)						

* De-rating to 70% load

** Only applicable to RT 5-10kVA Extended Runtime Model and RT 15/20kVA.

*** Not applicable to RT 20kVA

**** When the operating temperature is at 40 ~ 55° C, the UPS will be de-rated to 75% of its capacity

All specifications are subject to change without prior notice.