

RKE / RKEB / RHE / RHEB

1 chip super bright LED Revolving Warning Light



LED



Ø100

IP55 With SZ-200A
(RKEB/RHEB type)



Optional Rubber Gasket SZ-200A



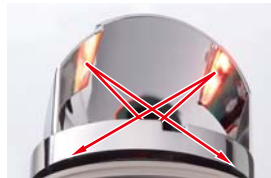
Compact LED revolving warning light featuring enhanced illumination with 1 chip super bright LED and new dispersion reflection system.

- Colors available: Red, Amber, Green, Blue.
- RHEB/RKEB series has an integral alarm (hi-pitch tone 90dB at 1m) that sounds with light operation.
- Compact Motor: High durability and energy-efficient.
- Energy-Efficient: Maintenance-free 1 chip super bright LED.
- Dome lens: Impact and heat resistant polycarbonate resin.
- Main Body: Impact and heat resistant ABS resin.
- CE Compliant (12V DC, 24V DC type only).
- Terminal Block: For easy wiring.

Newly developed reflector for LED revolving warning light.

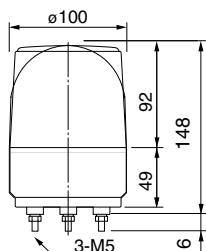


PATLITE LED revolving warning light uses a unique (patented) reflecting system solely designed for these models. Even though the dispersion effect of the LED unit is less than an incandescent bulb, PATLITE LED revolving warning light creates the equivalent dispersion effect with the light reflector.

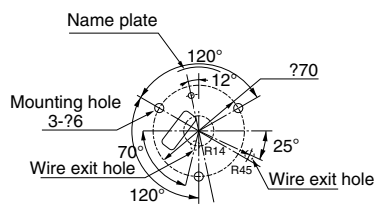


The newly designed reflector enables not only upward and sideway light reflections, but also downward light reflection that is not achieved by incandescent bulb type revolving warning lights. PATLITE LED revolving warning light is suitable for applications where high visibility from below is required.

Dimensions



Mounting Dimensions



(unit: mm)

RKE/RHE type

Size (mm)	Model	Rated Voltage	Current Consumption	Rotations per Minute	Weight
ø100	RKE/RKEB-12 RHE/RHEB-12	12 DC	0.25A	120	0.4kg
	RKE/RKEB-24 RHE/RHEB-24	24V DC	0.16A	120	0.4kg
	RKE/RKEB-100 RHE/RHEB-100	100V AC	0.04A	120	0.6kg
	RKE/RKEB-200 RHE/RHEB-200	200V AC	0.02A	120	0.6kg