

RH-L

Revolving Warning Light



With optional rubber gasket.



Optional Rubber Gasket
SZ-200A



 **Bulb**

 **Terminal**

90dB/m

Electronic Sound **1**

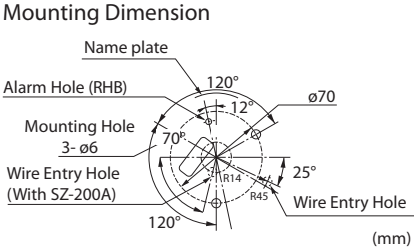
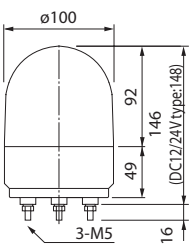
Ø100

IP55 With SZ-200A

Compact Revolving Warning Light featuring high durability and easy wiring with terminal block.

- Integral Rotating Parabolic Reflector: For enhanced visibility from a distance.
- Extended Bulb Life: Vibration-resistant automobile bulb.
- Built-in Alarm: Built-in audible alarm up to 90dB(at1m) for RHB-L.
- Installation: Indoors—upright, inverted, sideways; Outdoors—upright only.
- Terminal Block: For easy wiring.
- Main Body: Impact and heat-resistant ABS resin.
- Dome: Superior weather-resistant and light translucent acrylic resin.
- CE Compliance: DC 12/24V type only.
- Available Colors: Red, Amber, Green, Blue.

Dimensions



RH-L type

Model	Rated Voltage	Current	Flashes per Minute	Bulb		Mass
					No.	
RH/RHB/-12L	DC12V	0.8A	170	12V10W	9	0.4Kg
RH/RHB/-24L	DC24V	0.5A		24V10W	10	
RH/RHB-100L	AC100V	0.07A	150	12V5W	12	0.6Kg
RH/RHB-230L	AC220-240V	0.03A				

Bulb--G18 BA15S