

2019



# CATALOG

19" RACK, WALL RACK, NETWORK RACK, PDU, HEAVY DUTY FAN, ACCESSORIES

# RACK





# INDEX

<b>19" Glass Rack</b>	<b>1 - 2</b>
<b>19" Glass - Wave Rack</b>	<b>3 - 4</b>
<b>19" Curve - Wave Rack</b>	<b>5 - 6</b>
<b>Glass Wall Rack</b>	<b>7</b>
<b>Wave Wall Rack</b>	<b>8</b>
<b>Network Rack</b>	<b>9</b>
<b>CCTV Outdoor Steel Cabinet</b>	<b>10 - 11</b>
<b>Power Distribution Unit</b>	<b>12 - 14</b>
<b>Heavy Duty Fan</b>	<b>15</b>
<b>Accessories</b>	<b>16</b>

# 19" Glass Rack



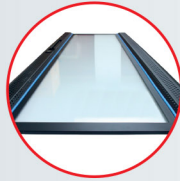
## LINK 19" Glass Rack

The premium innovation design, an elegant appearance, delivered with best enterprise service, support and reliability.

LINK Glass Rack offered high strength product, high durability and efficiency at work, also can support to install 19" equipment.



Front Door



### Tempered Glass Door (Front)

Tempered Glass  
Perforated Steel



### Steel Door (Rear)

Solid Steel without  
Hole for Protection

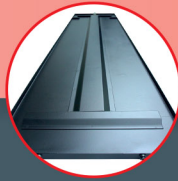


### Side Panel

Easy to Remove by Slide Lock  
and Security Lock



Rear Door



### Side Panel Support

I-Frame to Strengthen



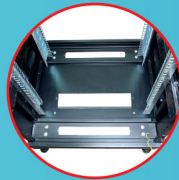
### Security Locks

Press and Swing  
Handel Lock



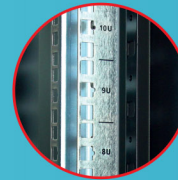
### Top Cover

Provided the Space  
for Cable Access with Cover



### Base

with Slide Shutter  
and the Space Cable Access



### Mounting Pole

Rack Unit (U) Screen on Pole



Side Panel



### LINK Logo

Front Door with LINK Logo



### Castor & Stand

Up and down movable stand  
with 360° caster



### Grounding System

Connecting Between  
all Removable Part of Rack  
with Copper Ground Wire 2.5mm<sup>2</sup>

## Glass Rack Features

- Modular knock down platform designed with grounding system for convenient assembly and adding accessories.
- Front door with "See-through" 5.0mm tempered glass and perforated surrounding for better ventilation.
- Rear door with I-frame to strengthen (excluding for 15U Rack).
- Provided swing handle lock at front and rear door.
- Side panels with I-frame to strengthen (excluding for 15U Rack) and easy removable by slide lock and security lock for installation and maintenance.
- Raised roof with vented can be mounted the fan sets and provided the space for cable access at the front and back of the roof with cover.
- Base with the slide shutter and the space for cable access and provided cover to close both of front and back when not using.
- 10x10mm Mounting pole made from Galvanized Steel with Zinc coated and can be adjustable with screened Rack unit (U) on the pole.
- Up and down movable stand with 360° caster made from Nylon 6 for convenience to move.
- The cable can be access from the top and the base.

## Standards

- 19" Standard, ISO9001:2015 and ISO14001
- ANSI/EIA-310D, IEC297-1, IEC297-2, BS5954 Part : 2, DIN 41494

## Specifications

### Material

- Frame : 2.0 mm galvanized steel
- Front Door : 1.2 mm galvanized steel
- Rear Door : 1.2 mm galvanized steel
- Side Panel : 1.2 mm galvanized steel
- Mounting Pole : 2.0 mm galvanized steel with Zinc coated

### Surface Finishing

- Electrostatic powder coating process, Black (RAL9004)

### Maximum Load Capacity

- Static loading : 1000kg

### Scope of Delivery

- Cabinets are packed in cartons.

## Ordering information

U Height (U=4.45 cm.)	Width (cm.)	Depth (cm.)	Height (cm.)	Order Number
15U	60	60	88	CH-60615GS
	60	80	88	CH-60815GS
27U	60	60	140	CH-60627GS
	60	80	140	CH-60827GS
	60	90	140	CH-60927GS
42U	60	60	207	CH-60642GS
	60	80	207	CH-60842GS
	60	90	207	CH-60942GS
	60	100	207	CH-61042GS
	60	110	207	CH-61142GS
	80	80	207	CH-80842GS
	80	100	207	CH-81042GS
	80	110	207	CH-81142GS



# 19" Glass-Wave Rack

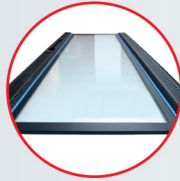


## LINK 19" Glass-Wave Rack

The premium innovation design, an elegant appearance, delivered with best enterprise service, support and reliability. LINK Glass-Wave Rack offered high strength product, high durability and efficiency at work, also can support to install 19" equipment.

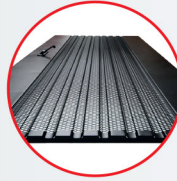


Front Door



### Tempered Glass Door (Front)

Tempered Glass  
Perforated Steel



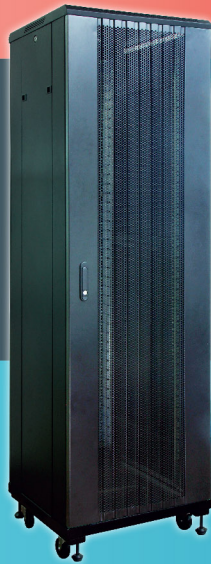
### Wave Door (Rear)

Hexa Perforated  
for 110% Ventilation

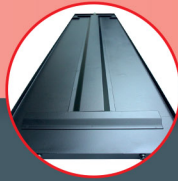


### Side Panel

Easy to Remove by Slide Lock  
and Security Lock



Rear Door



### Side Panel Support

I-Frame to Strengthen



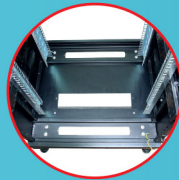
### Security Locks

Press and Swing  
Handel Lock



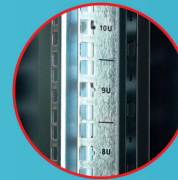
### Top Cover

Provided the Space  
for Cable Access with Cover



### Base

with Slide Shutter  
and the Space Cable Access



### Mounting Pole

Rack Unit (U) Screen on Pole



Side Panel



### LINK Logo

Front Door with LINK Logo



### Castor & Stand

Up and down movable stand  
with 360° castor



### Grounding System

Connecting Between  
all Removable Part of Rack  
with Copper Ground Wire 2.5mm<sup>2</sup>

## Glass-Wave Rack Features

- Modular knock down platform designed with grounding system for convenient assembly and adding accessories.
- Front door with "See-through" 5.0mm Tempered Glass and perforated surrounding for better ventilation.
- Rear door made from Galvanized Steel with hexa perforated for 110% ventilation.
- Provided swing handle lock at front and rear door.
- Side panels with I-frame to strengthen (excluding for 15U Rack) and easy removable by slide lock and security lock for installation and maintenance.
- Raised roof with vented can be mounted the fan sets and provided the space for cable access at the front and back of the roof with cover.
- Base with the slide shutter and the space for cable access and provided cover to close both of front and back when not using.
- 10x10mm Mounting pole made from Galvanized Steel with Zinc coated and can be adjustable with screened Rack unit (U) on the pole.
- Up and down movable stand with 360° caster made from Nylon 6 for convenience to move.
- The cable can be access from the top and the base.

## Standards

- 19" Standard, ISO9001:2015 and ISO14001
- ANSI/EIA-310D, IEC297-1, IEC297-2, BS5954 Part : 2, DIN 41494

## Specifications

### Material

- Frame : 2.0 mm galvanized steel
- Front Door : 1.2 mm galvanized steel
- Rear Door : 1.2 mm galvanized steel
- Side Panel : 1.2 mm galvanized steel
- Mounting Pole : 2.0 mm galvanized steel with Zinc coated

### Surface Finishing

- Electrostatic powder coating process, Black (RAL9004)

### Maximum Load Capacity

- Static loading : 1000kg

### Scope of Delivery

- Cabinets are packed in cartons.

## Ordering information

U Height (U=4.45 cm.)	Width (cm.)	Depth (cm.)	Height (cm.)	Order Number
15U	60	60	88	CH-60615GW
	60	80	88	CH-60815GW
27U	60	60	140	CH-60627GW
	60	80	140	CH-60827GW
	60	90	140	CH-60927GW
42U	60	60	207	CH-60642GW
	60	80	207	CH-60842GW
	60	90	207	CH-60942GW
	60	100	207	CH-61042GW
	60	110	207	CH-61142GW
	80	80	207	CH-80842GW
	80	100	207	CH-81042GW
	80	110	207	CH-81142GW



# 19" Curve-Wave Rack

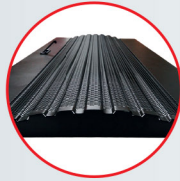


## LINK 19" Curve-Wave Rack

The premium innovation design, an elegant appearance, delivered with best enterprise service, support and reliability. LINK Curve-Wave Rack offered high strength product, high durability and efficiency at work, also can support to install 19" equipment.

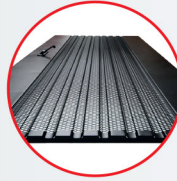


Front Door



### Curve Wave Door (Front)

Hexa Perforated for 120% Ventilation



### Wave Door (Rear)

Hexa Perforated for 110% Ventilation

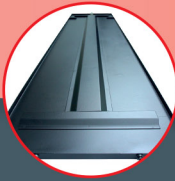


### Side Panel

Easy to Remove by Slide Lock and Security Lock



Rear Door



### Side Panel Support

I-Frame to Strengthen



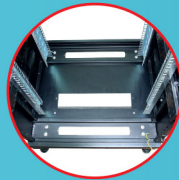
### Security Locks

Press and Swing Handel Lock



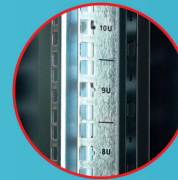
### Top Cover

Provided the Space for Cable Access with Cover



### Base

with Slide Shutter and the Space Cable Access



### Mounting Pole

Rack Unit (U) Screen on Pole



Side Panel



### LINK Logo

Front Door with LINK Logo



### Castor & Stand

Up and down movable stand with 360° castor



### Grounding System

Connecting Between all Removable Part of Rack with Copper Ground Wire 2.5mm<sup>2</sup>

## Curve-Wave Rack Features

- Modular knock down platform designed with grounding system for convenient assembly and adding accessories.
- Front door designed in curve wave hexa perforated for 120% ventilation.
- Rear door made from Galvanized Steel with wave hexa perforated for 110% ventilation.
- Provided swing handle lock at front and rear door.
- Side panels with I-frame to strengthen (excluding for 15U Rack) and easy removable by slide lock and security lock for installation and maintenance.
- Raised roof with vented can be mounted the fan sets and provided the space for cable access at the front and back of the roof with cover.
- Base with the slide shutter and the space for cable access and provided cover to close both of front and back when not using.
- 10x10mm Mounting pole made from Galvanized Steel with Zinc coated and can be adjustable with screened Rack unit (U) on the pole.
- Up and down movable stand with 360° caster made from Nylon 6 for convenience to move.
- The cable can be access from the top and the base.

## Standards

- 19" Standard, ISO9001:2015 and ISO14001
- ANSI/EIA-310D, IEC297-1, IEC297-2, BS5954 Part : 2, DIN 41494

## Specifications

### Material

- Frame : 2.0 mm galvanized steel
- Front Door : 1.2 mm galvanized steel
- Rear Door : 1.2 mm galvanized steel
- Side Panel : 1.2 mm galvanized steel
- Mounting Pole : 2.0 mm galvanized steel with Zinc coated

### Surface Finishing

- Electrostatic powder coating process, Black (RAL9004)

### Maximum Load Capacity

- Static loading : 1000kg

### Scope of Delivery

- Cabinets are packed in cartons.

## Ordering information

U Height (U=4.45 cm.)	Width (cm.)	Depth (cm.)	Height (cm.)	Order Number
15U	60	60	88	CH-60615CW
	60	80	88	CH-60815CW
27U	60	60	140	CH-60627CW
	60	80	140	CH-60827CW
	60	90	140	CH-60927CW
42U	60	60	207	CH-60642CW
	60	80	207	CH-60842CW
	60	90	207	CH-60942CW
	60	100	207	CH-61042CW
	60	110	207	CH-61142CW
	80	80	207	CH-80842CW
	80	100	207	CH-81042CW
	80	110	207	CH-81142CW



# Glass Wall Rack



### Side Panel

Easy to Remove by Slide Lock and Security Lock



### Security Lock

Press and Swing Handle Lock



### Mounting Pole

Rack Unit (U) Screen on Pole

### Double Part

### Single Part



### Grounding System

Connected between cabinet's structure and front door

## LINK Glass Wall Rack Features

- Suitable for indoor installation (Wall mount type) designed in front door, central panel and back base. Central panel equipped with rollers for opening and locking to back base part (excluding for 40cm depth).
- Cabinet made from 1.0mm Electro-Galvanized Steel Sheet and 2.0mm for 4-Mounting pole.
- Front door with "See-through" 5.0mm Tempered Glass and perforated surrounding for ventilation, swing handle lock was provided.
- Back part with hanger slots (steel frame) and provided 4 sets of wall mounting screw.
- Mounting pole can be adjustable with screened Rack Unit (U) on the pole.
- Cable access at the top and the base.
- Raised roof with vented and perforated surrounding for ventilation, can be mounted maximum 3 ventilating fans.
- Provided nuts and screws according to no. of Rack unit (U) for convenience to install network equipment.
- Both side panels are easy to open by slide lock and provided security lock for installation and maintenance.
- 180° opening door and can change the opening direction.
- Grounding system connected between cabinet's structure and front door.
- Supplementary accessories: shelves, drawers, fan sets, power distribution unit.

## Standards

- 19" Standard, ISO9001:2015 and ISO14001
- ANSI/EIA-310D, IEC297-1, IEC297-2, BS5954 Part : 2, DIN 41494

## Specifications

### Material

- Frame : 1.2 mm thick sheet steel
- Rear and Side Panels : 1.2 mm thick sheet steel
- Solid blanking plate : 1.2 mm thick sheet steel
- Glass Door : 5.0 mm thick safety glass
- Mounting Pole : 2.0 mm galvanized steel with Zinc coated

### Surface Finishing

- Electrostatic powder coating, Black (RAL9004)

### Scope of Delivery

- Cabinets are packed in cartons.

## Ordering information

U Height (U=4.45 cm.)	Width (cm.)	Depth		Height (cm.)	Order Number
		(cm.)	(Part)		
6U	60	40	Single	37	CW1-60406G
	60	50	Double	37	CW2-60506G
	60	60	Double	37	CW2-60606G
9U	60	40	Single	50.5	CW1-60409G
	60	50	Double	50.5	CW2-60509G
	60	60	Double	50.5	CW2-60609G
12U	60	40	Single	64	CW1-60412G
	60	50	Double	64	CW2-60512G
	60	60	Double	64	CW2-60612G

# Wave Wall Rack



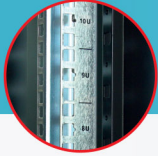
**Side Panel**

Easy to Remove by Slide Lock and Security Lock



**Security Lock**

Press and Swing Handle Lock



**Mounting Pole**

Rack Unit (U) Screen on Pole



**Double Part**

**Single Part**



**Grounding System**

Connected between cabinet's structure and front door

## LINK Wave Wall Rack Features

- Suitable for indoor installation (Wall mount type) designed in front door, central panel and back base. Central panel equipped with rollers for opening and locking to back base part (excluding for 40cm depth).
- Cabinet made from 1.0mm Electro-Galvanized Steel Sheet and 2.0mm for 4-Mounting pole.
- Front door designed in hexa perforated for ventilation, swing handle lock was provided.
- Back part with hanger slots (steel frame) and provided 4 sets of wall mounting screw.
- Mounting pole can be adjustable with screened Rack Unit (U) on the pole.
- Cable access at the top and the base.
- Raised roof with vented and perforated surrounding for ventilation, can be mounted maximum 3 ventilating fans.
- Provided nuts and screws according to no. of Rack unit (U) for convenience to install network equipment.
- Both side panels are easy to open by slide lock and provided security lock for installation and maintenance.
- 180° opening door and can change the opening direction.
- Grounding system connected between cabinet's structure and front door.
- Supplementary accessories: shelves, drawers, fan sets, power distribution unit.

## Standards

- 19" Standard, ISO9001:2015 and ISO14001
- ANSI/EIA-310D, IEC297-1, IEC297-2, BS5954 Part : 2, DIN 41494

## Specifications

### Material

- Frame : 1.2 mm thick sheet steel
- Rear and Side Panels : 1.2 mm thick sheet steel
- Solid blanking plate : 1.2 mm thick sheet steel
- Wave Perforated Door : 1.2 mm thick sheet steel
- Mounting Pole : 2.0 mm galvanized steel with Zinc coated

### Surface Finishing

- Electrostatic powder coating, Black (RAL9004)

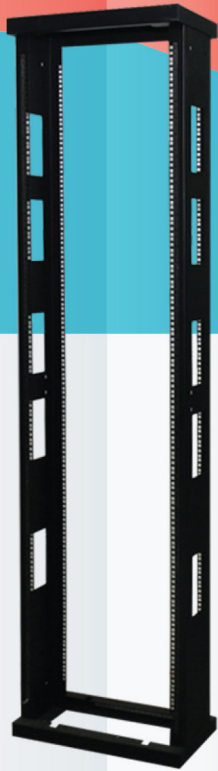
### Scope of Delivery

- Cabinets are packed in cartons.

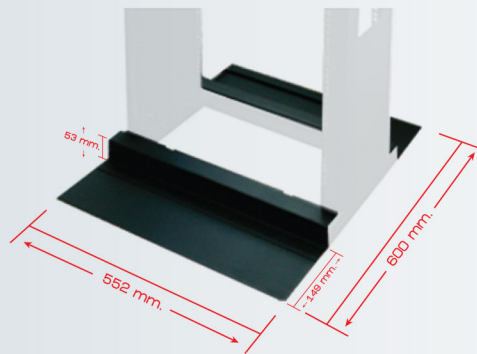
## Ordering information

U Height (U=4.45 cm.)	Width (cm.)	Depth		Height (cm.)	Order Number
		(cm.)	(Part)		
6U	60	40	Single	37	CW1-60406W
	60	50	Double	37	CW2-60506W
	60	60	Double	37	CW2-60606W
9U	60	40	Single	50.5	CW1-60409W
	60	50	Double	50.5	CW2-60509W
	60	60	Double	50.5	CW2-60609W
12U	60	40	Single	64	CW1-60412W
	60	50	Double	64	CW2-60512W
	60	60	Double	64	CW2-60612W





**Network Rack**



**Network Rack STEEL BASE**



**Vertical Management**

## LINK Network Rack Features

- LINK Network Rack designed for more strength, easy installation and maintenance.
- The cabinet is able to mount on the floor by steel base.
- The cable can be wiring at front and rear by maximum enlarged opening of the both side.
- Vertical Cable Management is optional provided.

## Standards

- 19" Standard, ISO9001:2015 and ISO14001
- ANSI/EIA-310D, IEC297-1, IEC297-2, BS5954 Part : 2, DIN 41494

## Specifications

### Material

- Cabinet's Frame : 2.0 mm thick sheet steel
- Side Panels : 1.5 mm thick sheet steel
- Steel Base : 2.0 mm thick sheet steel
- Vertical Management : 1.5 mm thick sheet steel

### Surface Finishing

- Electrostatic powder coating process, Black RAL9004)

Height (U=4.445 cm.)	Width (cm)	Depth (cm)	Height (cm)	Order Number	
				Network Rack	Vertical Management
42U	55	30	205	CN-61142	CN-61158
45U	55	30	220	CN-61145	CN-61155
OPTION	Steel Base of Network Rack ( w552 x D600 x H53 mm. )				CN-61150

## Product Features

- Hanging cabinet type for outdoor, suitable for CCTV system and fiber optic distribution.
- Produced from Electro-Galvanized sheet steel with thickness of 1.0mm, Light weight and completed rust proof.
- New shine light gray color by electrostatic powder coating paint, UV-Resistance Paint. Index of protection IP43
- Provide build in push handle lock at front door.
- Water-proof and ventilation by roofer at side panels.
- Supporting by double steel bar with thickness of 2.0mm at Back side.
- Roof Cover can be mounted with single of 4" ventilating fan (CK-80104) to release the accumulated heat inside the cabinet and extend the life of equipment.
- Side panels and roof over are water proof by special rubber seal.
- Provide 3 knock out holes size 3/4 " and 1" for cable entry.
- Provide cable guide inside the cabinet for manages all the cables.
- Provide removable component plate with thickness 1.5mm. and stud. Plate can remove out from the cabinet for convenient to install the equipment.
- With stud, plate can be containing double splice tray (SV-2256) and 1EA of 4 Outlet power distributions.
- Provide ground wire connecting between structure cabinet and front door.
- by ISO 9001:2008 Company.



## Standards

- ISO9001:2015 and ISO14001

## Specifications

### Material

- Frame : 1.0mm thick, EG steel
- Removable Plate : 1.5mm thick, EG steel
- Back Support Bar : 2.0mm thick, EG double steel

### Surface Finishing

- Electrostatic powder coating, dark gray color

### Scope of Delivery

- Cabinets are packed in cartons.

## Order Information

Order Number	Description	Dimension (cm) W x H x D
UV-9002	CCTV Outdoor Steel Cabinet Type 2	43 x 68 x 15.8
UV-9004	CCTV Outdoor Steel Cabinet Type 4	50 x 75 x 15.8

### Recommet Accessories

Order Number	Description
CK-80104	LINK 1xø4" Heavy Duty Fan
SV2256	LINK Splice Tray with Plastic Base for 12 Fibers
SV-2252A	LINK Fusion Splice Protector Sleeve



# CCTV Outdoor Steel Cabinet



## LINK CCTV Outdoor Cabinet Feature

- Hanging cabinet type for outdoor installation, suitable for CCTV system and fiber optic distribution.
- Suitable for fiber optic equipment , industrial media converter and industrial Ethernet switches.
- Designed for 2 types are Single Door and Two Layer Door.
- Single Door is one layer design, suitable for outdoor installation. Index of protection IP43.
- Two Layers Door suitable for harsh environment with outdoor installation. Designed of two layers with the Sun Shield layer for better protection. Index of protection IP54.
- Produced from Electro-Galvanized Sheet steel, light weight and completed rust proof.
- Provide build in Push Lock at front door.
- Water-proof and ventilation by roofer at side panels.
- Roof Cover can be mounted with single of 4" ventilation fan (CK-80104) to release the accumulated heat inside the cabinet and extend the life of equipment.
- Side panels and roof cover are water proof by special rubber seal.
- Provide cable guide inside the cabinet for manages all the cable.
- Provide 3 knock out holes size 3/4 " and 1" for cable entry.
- Provide Din Rail for install the industrial converter, switch and power supply.
- The removable plate with stud can be containing double splice tray (SV-2256) and 2 EA of adapter snap plate for 24 fiber core.
- Provide ground wire connecting between structure cabinet and front door.



## Standards

- ISO9001:2015 and ISO14001

## Specifications

### Material

- Frame : 1.2mm thick, EG steel
- Removable Plate : 1.5mm thick, EG steel
- Back Support Bar : 2.0mm thick, EG double steel

### Surface Finishing

- Electrostatic powder coating, dark gray

### Scope of Delivery

- Cabinets are packed in cartons.

## Order Information

Order Number	Description	Dimension (cm) W x H x D
UV-9010S	Single Door CCTV Outdoor Steel Cabinet	43 x 68 x 25
UV-9012H	Two Layers Door CCTV Outdoor Steel Cabinet	46.8 x 68 x 26.8

## Product Description

LINK Power Distribution Unit (PDU) can meet the general requirements of power distribution and special demand. Solid, easy installation and modular composite structure are the basic characteristics. Security and stability are our guarantee for the products. The products can meet the installation requirements of 19-inch standard cabinet and non-standard cabinet. More control, outlet standards, accessibility functions can be customized. Applications support datacenter, telecommunications, PC systems, audio video, security, sound and other. Ideal for distribution of UPS, generator or other AC power to protected equipment.

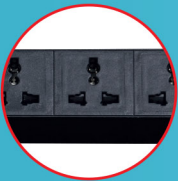
## Specifications

Nominal Voltage	: 200 - 250 VAC
Frequency	: 50/60Hz
Maximum Amps	: 15A, 16A, 32A
Plug Type	: NEMA 5-15P, IEC309 16A & 32A, IEC320 C14 plug
Outlet Type	: Universal, IEC320 C13
Overload protection	: 15A
Circuit Breaker	: 16A, 32A
Power Cord Length (m)	: 3m
Power Cord Electrical Wiring	: 3x16AWG (15A) 3x2.5mm <sup>2</sup> (16A, Excluding for CH-107XX) 3x6mm <sup>2</sup> (32A)
Socket material	: Engineering Plastic
Panel Material	: Aluminium Alloy
Outlet quantity	: 6, 12, 20 outlet
PDU Bracket Kit	: Included 1 Pairs
Warranty	: 1 Year
Compliant	: RoHS

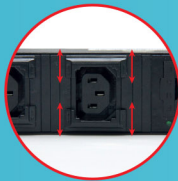


## Features

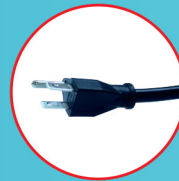
### Outlet Type



Universal Outlet  
w/Eye Shutter



IEC320 C13 Outlet  
w/Lockable



NEMA 5-15P



Industrial Power Plug  
IEC 309, IP44  
(16A & 32A)



IEC320 C14

### Plug Type



Lighting Switch  
w/Guard



Overload Protection  
w/LED Indicator



Circuit Breaker  
w/Guard

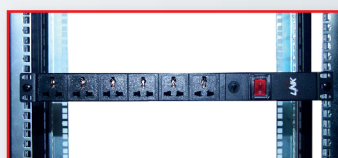


Volt - Amp Meter  
w/Alarm

### Special Function



PDU Bracket Kit  
for Vertical Mount



Horizontal Mounting



Vertical Mounting  
w/PDU Bracket Kit

### Installation

# Power Distribution Unit



CH-103XX



**Product Description :**

PDU XX Universal Outlet  
(Lighting SW+Protection LED)



CH-104XX



**Product Description :**

PDU XX Universal Outlet  
(Circuit Breaker+Power Plug)



CH-106XX



**Product Description :**

PDU XX Universal Outlet  
(Lighting SW+V-A+Power Plug)



CH-107XX



**Product Description :**

PDU XX Universal Outlet  
(Circuit Breaker+V-A)



CH-108XX



**Product Description :**

PDU XX Universal Outlet  
(Circuit Breaker+V-A+Power Plug)



CH-113XX



**Product Description :**

PDU XX Universal + XX C13 Outlet  
(Lighting SW+Protection LED)



CH-114XX



**Product Description :**

PDU XX Universal + XX C13 Outlet  
(Circuit Breaker+Power Plug)

\* XX : 06 = 6 OUTLET, 12 = 12 OUTLET, 20 = 20 OUTLET





CH-116XX



**Product Description :**

PDU XX Universal + XX C13 Outlet  
(Lighting SW+V-A+Power Plug)



CH-124XX



**Product Description :**

PDU XX C13 Outlet  
(Circuit Breaker 16A+Power Plug)



CH-126XX



**Product Description :**

PDU XX C13 Outlet  
(Lighting SW+V-A+Power Plug)

\* XX : 06 = 6 OUTLET, 12 = 12 OUTLET, 20 = 20 OUTLET

## PDU Product Guide

Order Number	Outlet Type		Plug Type			Special Function					L x W x H (cm)
	Universal w/Shutter	IEC320 C13 w/Lockable	NEMA5-15P	Industrial Power Plug IEC309		Lighting switch w/Guard	Overload Protection w/ LED indicator	Volt-Amp meter	Circuit Breaker w/Guard		
				16A	32A				16A	32A	
CH-10306	6	-	✓	-	-	✓	✓	-	-	-	48.4 x 4.44 x 4.45
CH-10312	12	-	✓	-	-	✓	✓	-	-	-	80.8 x 4.44 x 4.45
CH-10320	20	-	✓	-	-	✓	✓	-	-	-	118.4 x 4.44 x 4.45
CH-10406	6	-	-	✓	-	-	-	-	✓	-	48.5 x 4.44 x 4.45
CH-10412	12	-	-	✓	-	-	-	-	✓	-	84.8 x 4.44 x 4.45
CH-10420	20	-	-	-	✓	-	-	-	-	✓	112.4 x 4.44 x 4.45
CH-10512	12	-	-	-	✓	-	-	-	-	✓	84.8 x 4.44 x 4.45
CH-10606	6	-	-	✓	-	✓	-	✓	-	-	48.5 x 4.44 x 4.45
CH-10612	12	-	-	✓	-	✓	-	✓	-	-	87.3 x 4.44 x 4.45
CH-10706	6	-	✓	-	-	-	-	✓	✓	-	53.6 x 4.44 x 4.45
CH-10712	12	-	✓	-	-	-	-	✓	✓	-	94.8 x 4.44 x 4.45
CH-10806	6	-	-	✓	-	-	-	✓	✓	-	64.6 x 4.44 x 4.45
CH-10812	12	-	-	✓	✓	-	-	✓	✓	-	94.8 x 4.44 x 4.45
CH-10820	20	-	-	-	-	-	-	✓	-	✓	132.4 x 4.44 x 4.45
CH-11306	3	3	✓	-	-	✓	✓	-	-	-	48.5 x 4.44 x 4.45
CH-11312	6	6	✓	-	-	✓	✓	-	-	-	76.6 x 4.44 x 4.45
CH-11320	10	10	✓	-	-	✓	✓	-	-	-	111.4 x 4.44 x 4.45
CH-11406	3	3	-	✓	-	-	-	-	✓	-	48.5 x 4.44 x 4.45
CH-11412	6	6	-	✓	✓	-	-	-	✓	-	80.6 x 4.44 x 4.45
CH-11420	10	10	-	-	-	-	-	-	-	✓	114.4 x 4.44 x 4.45
CH-11606	3	3	-	✓	-	✓	-	✓	-	-	48.5 x 4.44 x 4.45
CH-11612	6	6	-	✓	✓	✓	-	✓	-	-	83.1 x 4.44 x 4.45
CH-11820	10	10	-	-	-	-	-	✓	-	✓	125.4 x 4.44 x 4.45
CH-12406	-	6	-	✓	-	-	-	-	✓	-	48.5 x 4.44 x 4.45
CH-12412	-	12	-	✓	✓	-	-	-	✓	-	76.4 x 4.44 x 4.45
CH-12420	-	20	-	-	-	-	-	-	-	✓	108.4 x 4.44 x 4.45
CH-12606	-	6	-	✓	-	✓	-	✓	-	-	48.5 x 4.44 x 4.45
CH-12612	-	12	-	✓	✓	✓	-	✓	-	-	78.9 x 4.44 x 4.45
CH-12820	-	20	-	-	-	-	-	✓	-	✓	118.4 x 4.44 x 4.45



# Heavy Duty FAN



1x04"



2x04"



3x04"

## LINK Heavy Duty Fan Features

- Fan's type designed to 4" with heavy duty 2 ball bearing.
- Impellers made from fiberglass reinforced plastic, UL94V-0 rating
- 120x120x38mm Die-Cast Aluminum Housing.
- 7.0mm ABS Plastic Guard with trademark embossing.
- 220VAC with grounding system.
- Black frame made from Electro-Galvanized Steel with Electrostatic powder coating process.

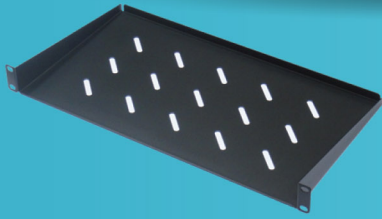
## Technical Specifications

- Speed : 2,650 rpm @ 50 Hz, 3,000 rpm @ 60 Hz
- Max Air Flow : 2.38 m<sup>3</sup>/min or 84.8 CFM
- Operating Temp : -30°C to 70°C
- Input Voltage : 220 - 230 VAC, 50/60 Hz
- Max Power : 22 Watts @ 50 Hz, 19 Watts @ 60 Hz
- Acoustical Noise : 46 dB
- Life expectancy : 50,000 Hours
- Power cord : 1.8m (2x0.5mm<sup>2</sup>) for CK-80104, 1.4m (3x18 AWG) for CK-81204 and CK-81304
- Approvals : CE & UL/CSA

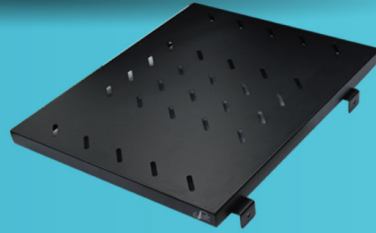
## Ordering information

Description	Order Number
FAN 1x04" HEAVY DUTY FAN	CK-80104
FAN 2x04" HEAVY DUTY FAN	CK-81204
FAN 3x04" HEAVY DUTY FAN	CK-81304

## Component Shelves



**Front Shelf**



**Fix Shelf**



**Slide Shelf**

### Standards

- ANSI/EIA-310D-1992, IEC60297-1, IEC60297-2, BS5954 Part : 2, DIN 41494

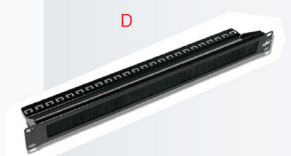
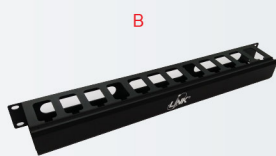
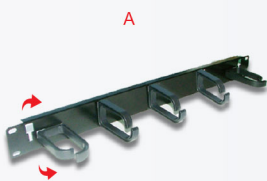
### Specifications

- Material : 1.5mm Electro-Galvanized Steel
- Ventilation : Perforated surrounding to ventilate
- Color : Black color painted by Electrostatic powder coating process.

### Ordering information

Description	Depth				
	25 cm	35 cm	55 cm	65 cm	75 cm
<b>Front Shelf</b>	CK-12250	CK-12350	-	-	-
<b>Fix Shelf</b>	-	CK-20350	CK-20550	CK-20650	CK-20750
<b>Slide Shelf</b>	-	CK-40350	CK-40550	CK-40650	CK-40750

## Cable Management & Screw Set



### Specifications

- Material : Steel
- Thickness : 1.0 - 1.5 mm
- Color : Black color painted

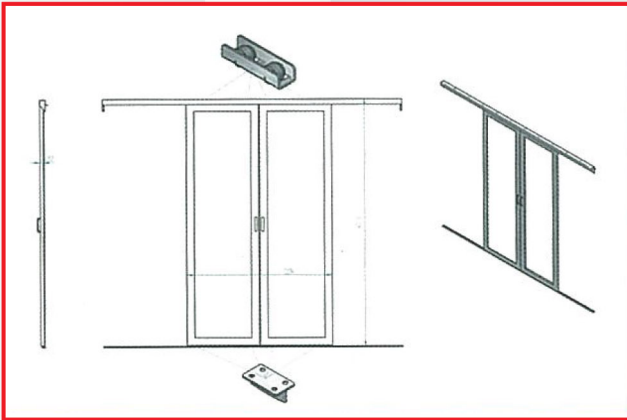
### Ordering information

Type	Description	Height	Order Number
<b>A</b>	Cable Management Panel with Pastic Holder (Plastic)	1U	US-3051
<b>B</b>	Cable Management Panel with Cover	1U	US-3053
<b>C</b>	Cable Management Panel with Cover	2U	US-3054
<b>D</b>	Brush Cable management with Bracket Steel	1U	US-3055
<b>E</b>	Vertical Cable Routing Hanger, Small	51.9x83x10 cm	US-3057
<b>F</b>	Vertical Cable Routing Hanger, Medium	83.5x83x10 cm	US-3058
<b>G</b>	Vertical Cable Routing Hanger, Large	83.5x144.7x10 cm	US-3059
<b>H</b>	Hanger for Patch Panel Angle (1U)	44x77x88.5 cm	US-3050
<b>I</b>	Blank Panels	1U - 8U	CH-60001-X
<b>J</b>	Black Fixing Set (Screw M6+Cage nut+Plastic washer)	-	CH-10010SET

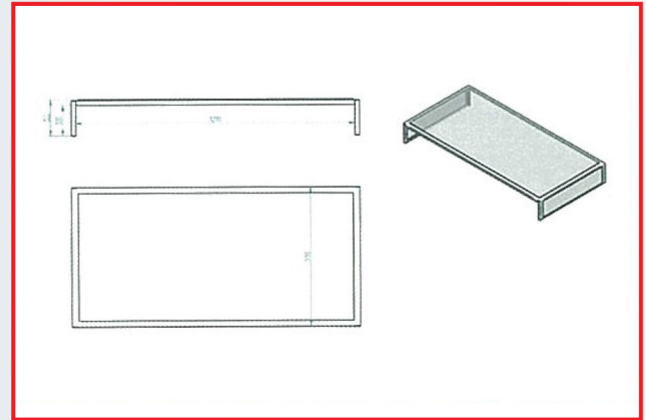
# Cold Containment



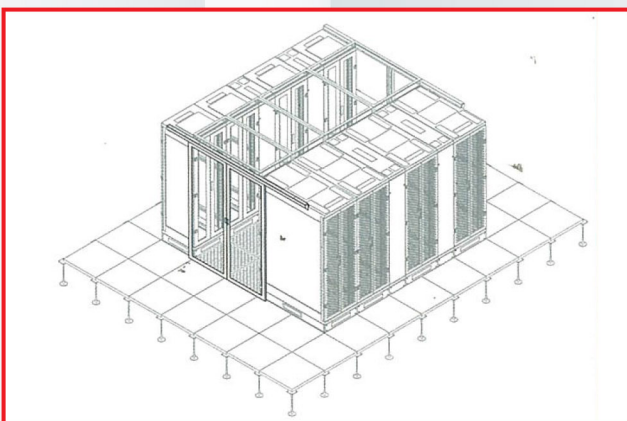
\*Customize by Order



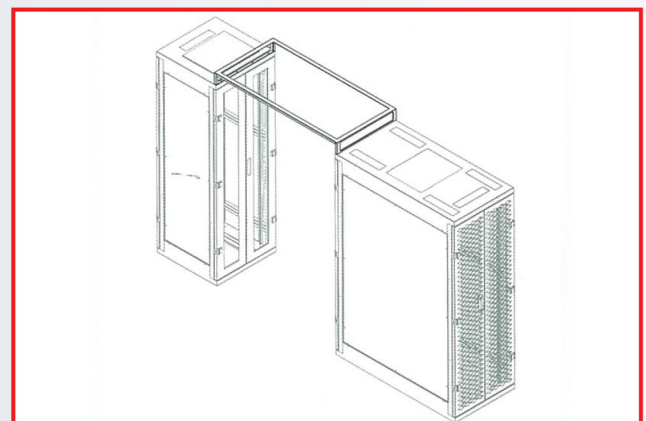
Slide Door



Unit of Acrylic Roof

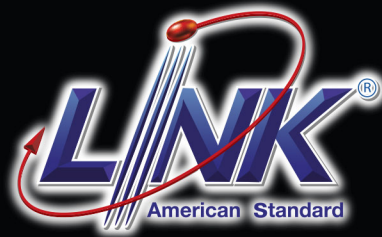


Server Room



Roof Install





Distributed by

